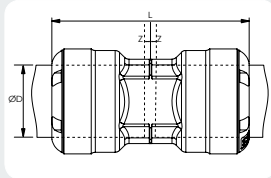


> Pipe-to-pipe and threaded connectors

The range of Transair pipe-to-pipe and threaded connectors provides versatility of design and helps to overcome constraints often encountered with the structure of industrial buildings.

- > Quick connection
- > Removable and reusable
- > Full bore design
- > Non-flammable materials (UL94HB standard)

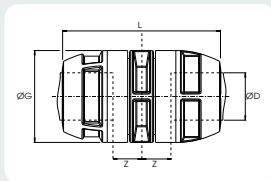
Ø
1/2"
3/4"



Pipe-to-pipe connector

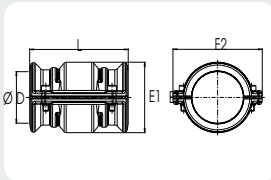
Transair	ØD (in)	L	Z
RR06 H3 01	1/2	63.2	1.2
RR06 H5 01	3/4	85.5	1.2

Ø
1 1/2"
2"



Transair	ØD (in)	ØG	L	Z
RP06 M4 01	1 1/2	82	155	2.6
RP06 M6 01	2	100	165	2.6

Ø
3"
4"



Connector (clamp + cartridge assembly)

Transair	ØD (in)	L	E1	E2	M	N
RR01 L1 01	3	146	104	132	88.7	51.4
RR01 L3 01	4	146	128	157	125	52.7

